



OMNIENTERPRISE™

3.3 Highlights



Get **IN-SYNC** with Data Sharing.

Turbo-Charged Data Sharing

Introducing HyperCache™ for ODBC

In today's business environment, speed is everything. Now you can turbo charge ODBC processing to new levels of performance with HyperCache for ODBC, an OmniEnterprise exclusive.

A sophisticated set of algorithms embedded within OmniEnterprise, HyperCache will significantly boost ODBC performance over prior releases while maintaining superior data integrity.

HyperCache is especially useful with Oracle® replication using OmniReplicator™ or with Microsoft® SQL Server and Oracle snapshot copies using OmniCopy™ in either delete-on-target mode or refresh mode.

HyperCache. . .built for performance with the confidence of integrity.

Introducing OMNI Agents – Intelligence in Data Sharing

Data sharing and management are complex enough. To simplify the use of OmniEnterprise, several specialized algorithms and software instruction sets have been incorporated into its newest version. These underlying intelligent agents, or “OMNI Agents,” monitor the system, automate tasks and perform complex functions that help manage the data-sharing environment.

Fundamental to several of OmniEnterprise's new features, OMNI Agents are powerful additions to the solution, forming the foundation of many added features and core functionality in the future.

Introducing SmartCache™

Minimize data latency, conserve valuable bandwidth and achieve superior performance with OmniEnterprise SmartCache.

SmartCache utilizes new OMNI Agent technology to actively search for small transactions in the replication process and bundle them into a single unit. The OMNI Agent then invokes the powerful SmartCache Commit Engine™ to replicate the transactions as a single unit.

Because SmartCache manages only complete transactions in the SmartCache Commit, the process achieves exceptional performance without compromising data integrity, while the overhead of source and target synchronization that is normally required at the end of every transaction, however small, is minimized to a single unit.

SmartCache. . .intelligent, efficient and FAST!

Introducing SmartLogs™

User and system errors once meant disruption of business, system downtime, overhead impact and considerable frustration. Minimize the impact with OmniEnterprise SmartLogs, a revolution in advanced support.

SmartLogs utilizes new OMNI Agent technology to constantly monitor the replication process. In the unlikely event that a process should abnormally terminate, the OMNI Agent will automatically invoke SmartLogs to pinpoint relevant transaction logs, gather them up, and compress them into a single file that can be transmitted quickly and easily over the Internet to a support team.

Fortified with complete information, the operators and support team can immediately begin the resolution process and dramatically reduce the support time involved.

SmartLogs. . .the perfect resolution for an imperfect world!

**Improved
functionality
through
system
vigilance
and task
automation.**

Expanded Microsoft SQL Server and Windows® Support

Support for Multiple Triggers

OmniReplicator fully supports the multiple triggers available in Microsoft SQL Server 7.0 databases.

Windows 2000 Support

In addition to Windows NT®, OmniEnterprise now supports Windows 2000.

Expanded Oracle Support

Advanced Large Object Support: BLOBs and CLOBs

Release 3.3 extends OmniEnterprise support for large objects to include the new Oracle BLOB (Binary Large Object) and CLOB (Character Large Object) data types.

Support for New Oracle Release

OmniEnterprise platform support has expanded to include Oracle Server 8.1.6 (Oracle 8i Release 2).

OmniDirector™: Advanced Monitoring, Management and Ease-of-Use

Customized Queries

Don't be stuck monitoring only those replication environment variables that your data-sharing vendor wants you to see.

OmniEnterprise lets you create customized queries that provide the information that is most important to help ensure that your unique information-sharing environment continues operating at peak performance. You can then display the results online, in real-time, without having to switch out of the OmniDirector environment.

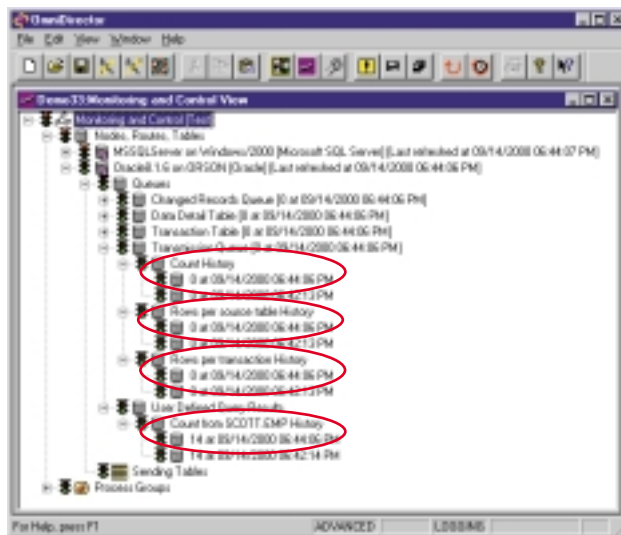
Automated Metabase Install

Save time and effort by installing Windows NT and Windows 2000 EISM metabases right from OmniDirector, without the need for any additional programs or scripts.

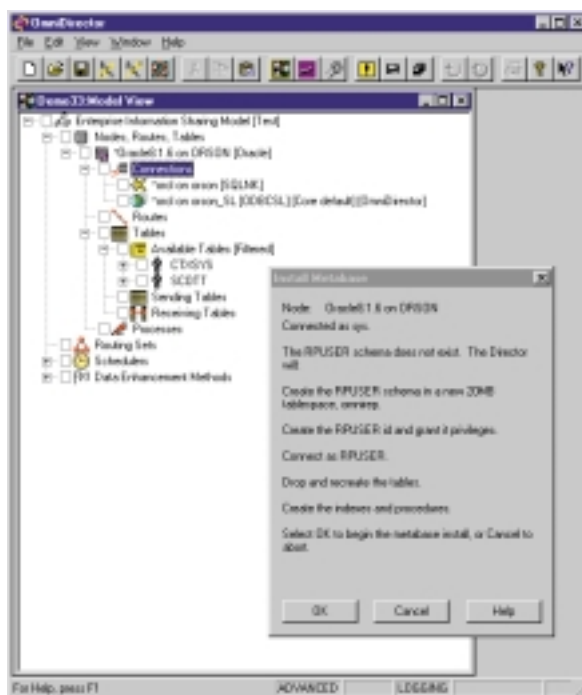
Incremental Commit for EISM

The new Incremental Commit functionality of OmniDirector minimizes the number of updates applied to the EISM by saving only changed EISM elements.

The result? Accelerated user-interface response slashes the time required to maintain your Enterprise Information Sharing Model™ (EISM).



Customized queries provide the information *you* need.



Quickly and easily install the EISM metabase without leaving OmniDirector.



Get iN-SYNC with Data Sharing.

For complete information, visit our website: www.lakeviewtech.com



LAKEVIEW
TECHNOLOGY

Worldwide Headquarters

2301 West 22nd Street Suite 206
Oak Brook, IL 60523 USA
Tel: 630-573-0440

Lakeview Technology Asia-Pacific

Hong Kong, CHINA
Tel: +852-2970-3280

Lakeview Technology Europe

Brussels (Leuven) BELGIUM
Tel: +32-16-39-55-55

© Copyright 2000, Lakeview Technology Inc.
OmniEnterprise is a registered trademark of
Lakeview Technology Inc. All other trademarks
are property of their respective holders.